



IMMUNOLÓGIAI ÉS  
BIOTECHNOLÓGIAI  
INTÉZET



# 12th practice: Autoantibody diagnostics

Basic Immunology

University of Pécs, Clinical Center

Department of Immunology and Biotechnology

Pécs, 2026.

# Autoimmunity

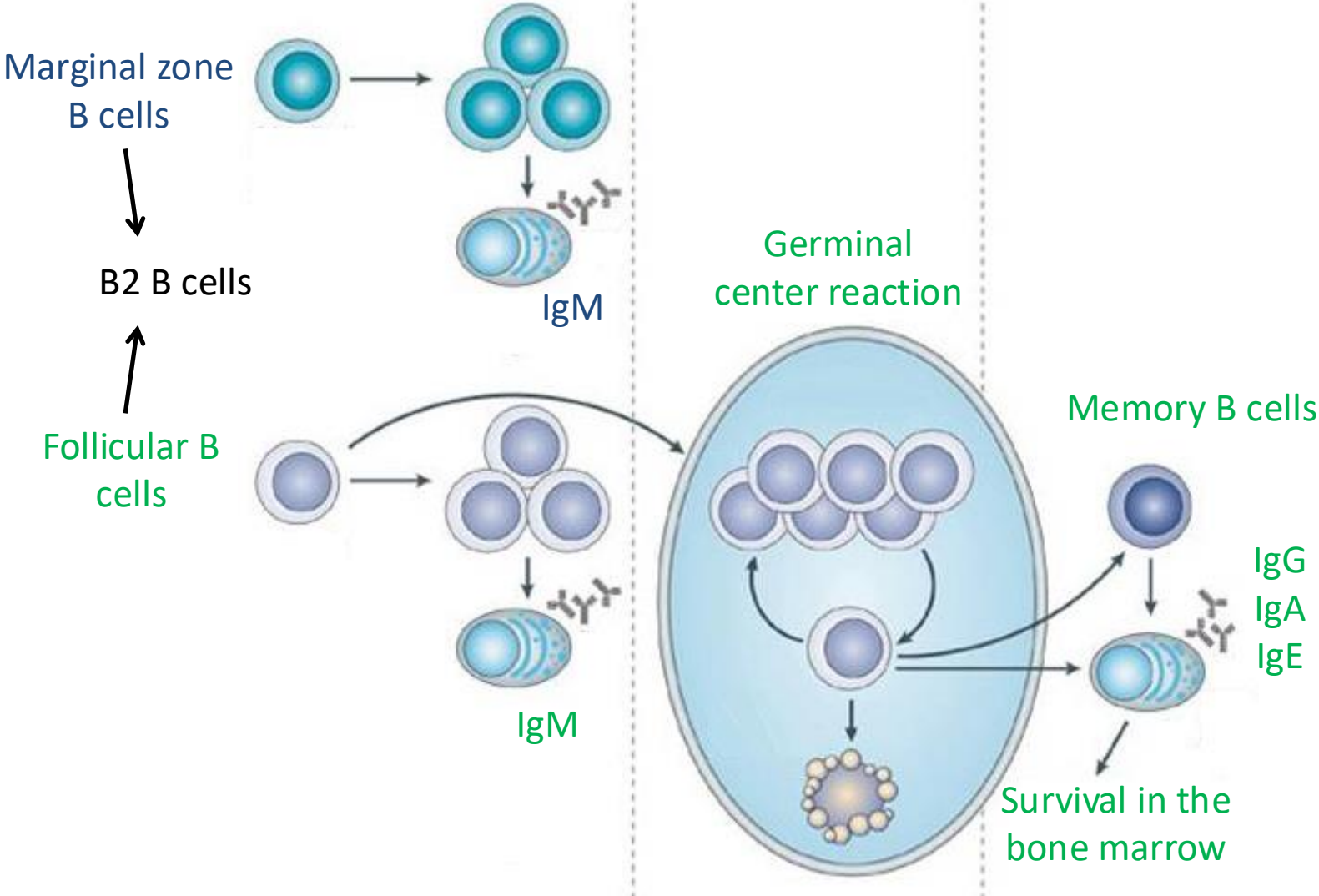
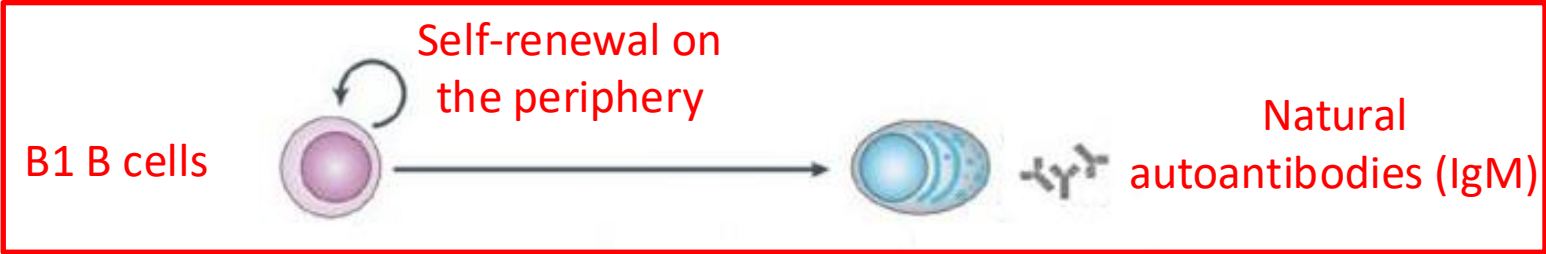
- Autoimmunity: Recognition and immune response to **self-antigens**.

## Natural autoimmunity

- Has immunoregulatory role
- Antibody production without external stimuli
- **Natural autoantibodies:**
  - **Low affinity**
  - **Polyspecific**
  - **Mainly IgM**
  - Low serum concentrations
  - Produced by **B1 B cells**

## Pathological autoimmunity

- Causes or is associated with pathological conditions
- **Pathological autoantibodies:**
  - **High affinity**
  - **Monospecific**
  - **Mainly IgG**
  - High serum concentrations
  - Produced by **B2 B cells**

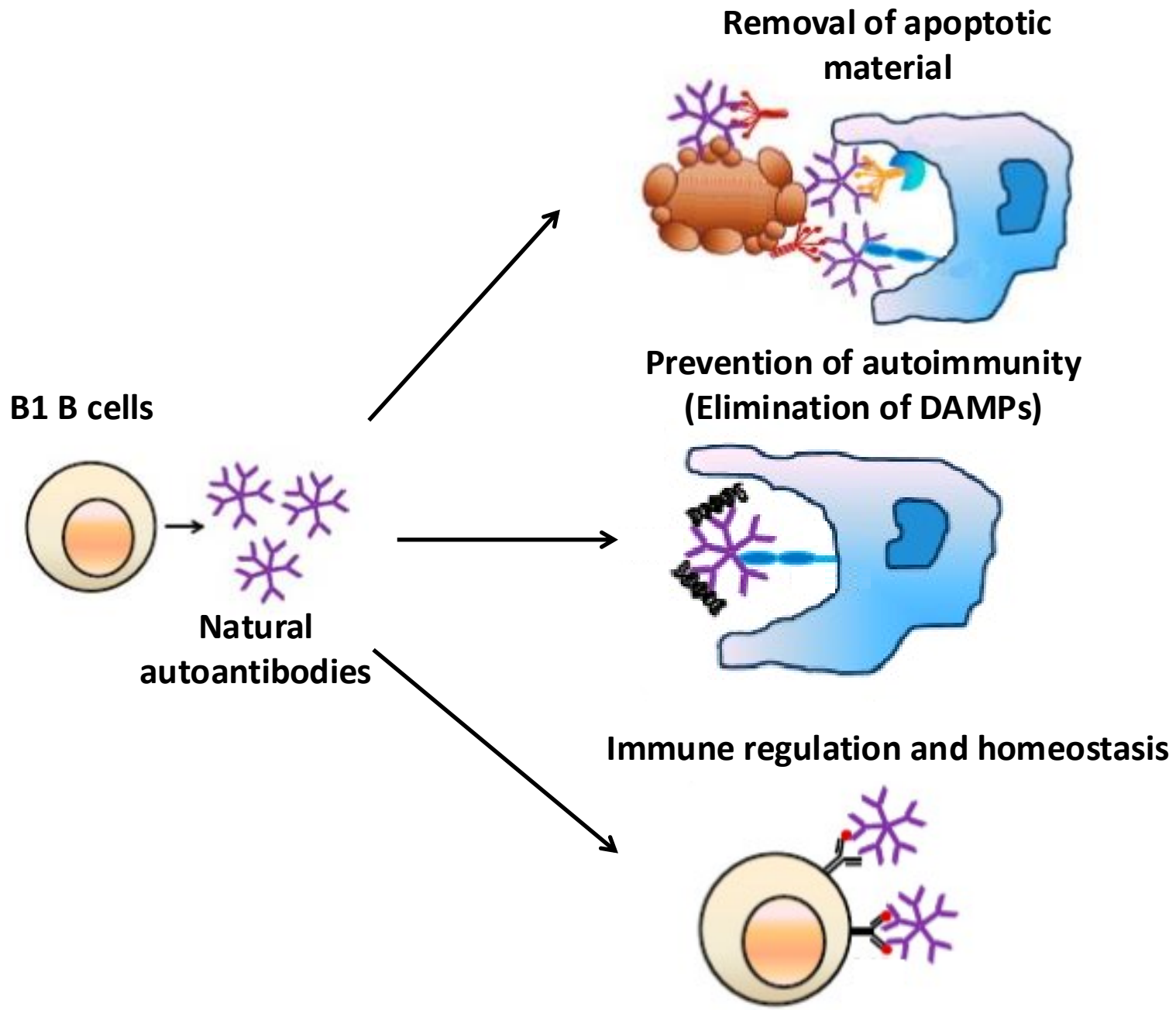


# Targets of natural autoantibodies

- **Evolutionary conserved** structures that are usually found in all cells, e.g.:
  - Heat shock proteins
  - Proteins of the cytoskeleton
  - Metabolic enzymes
  - Nuclear structures
- Hypothesized role: **Maintaining immunological tolerance**, removal of self-antigens (e.g. DAMP: Damage-associated molecular pattern), prevention of pathological autoimmunity
- Natural autoantibodies are constitutively present and their repertoires are constant, independent of age or gender and **characteristic for each individual**.

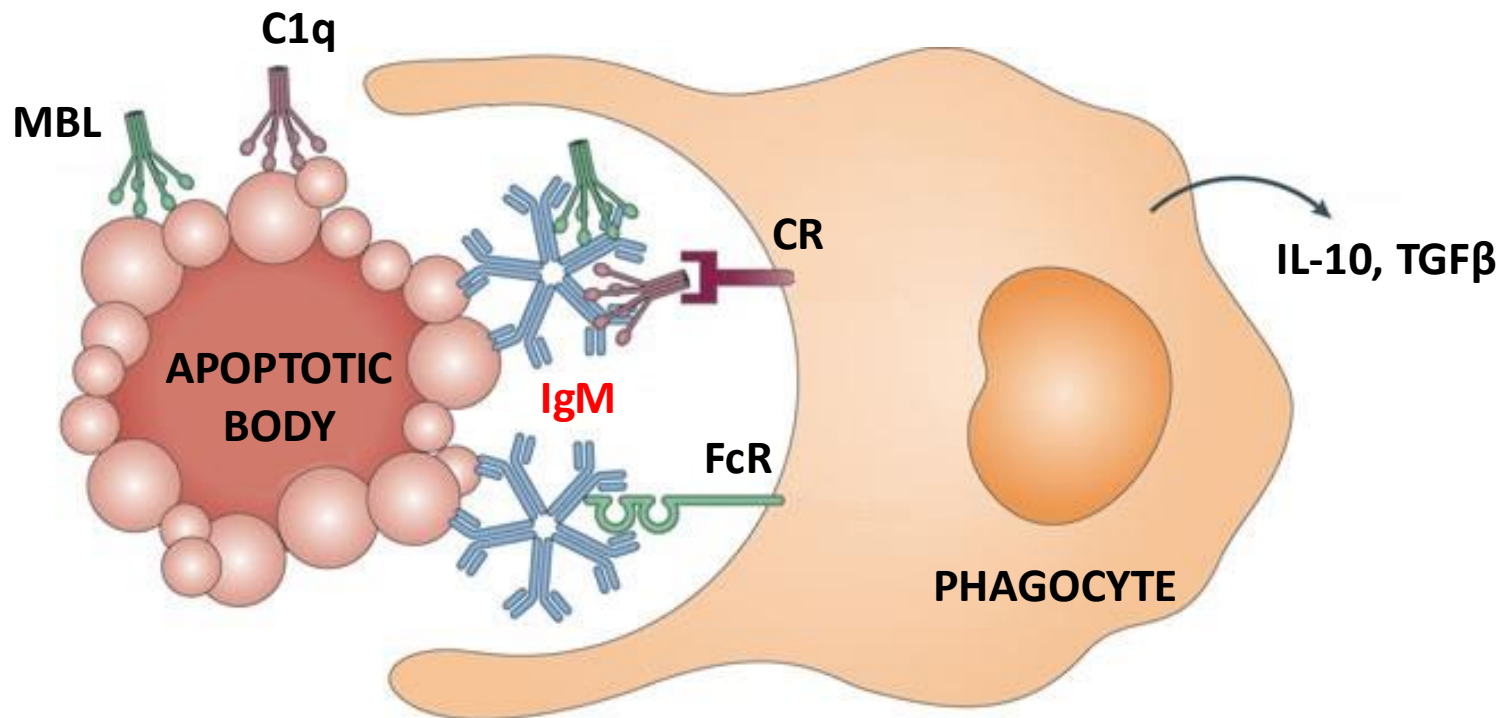


**Immunological homunculus or Immunculus**



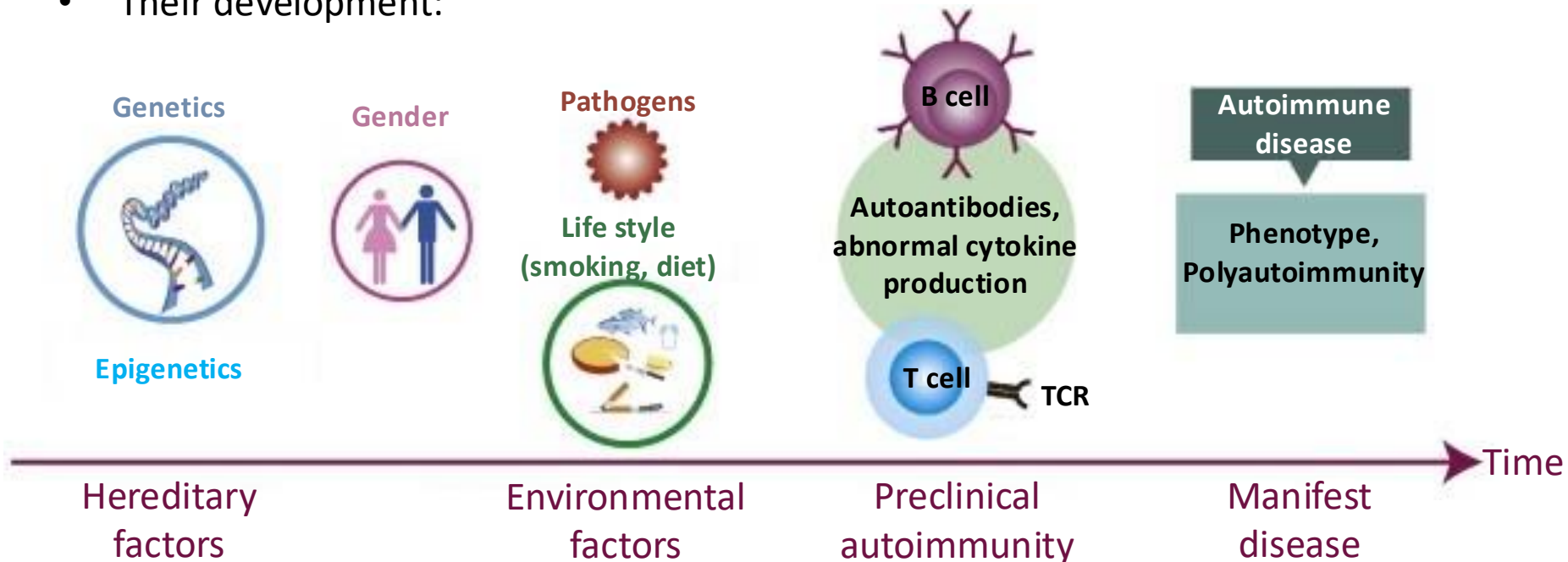
# Removal of apoptotic bodies

- Opsonization of **apoptotic bodies**, phagocytosis via **Fc** and **complement receptors**.



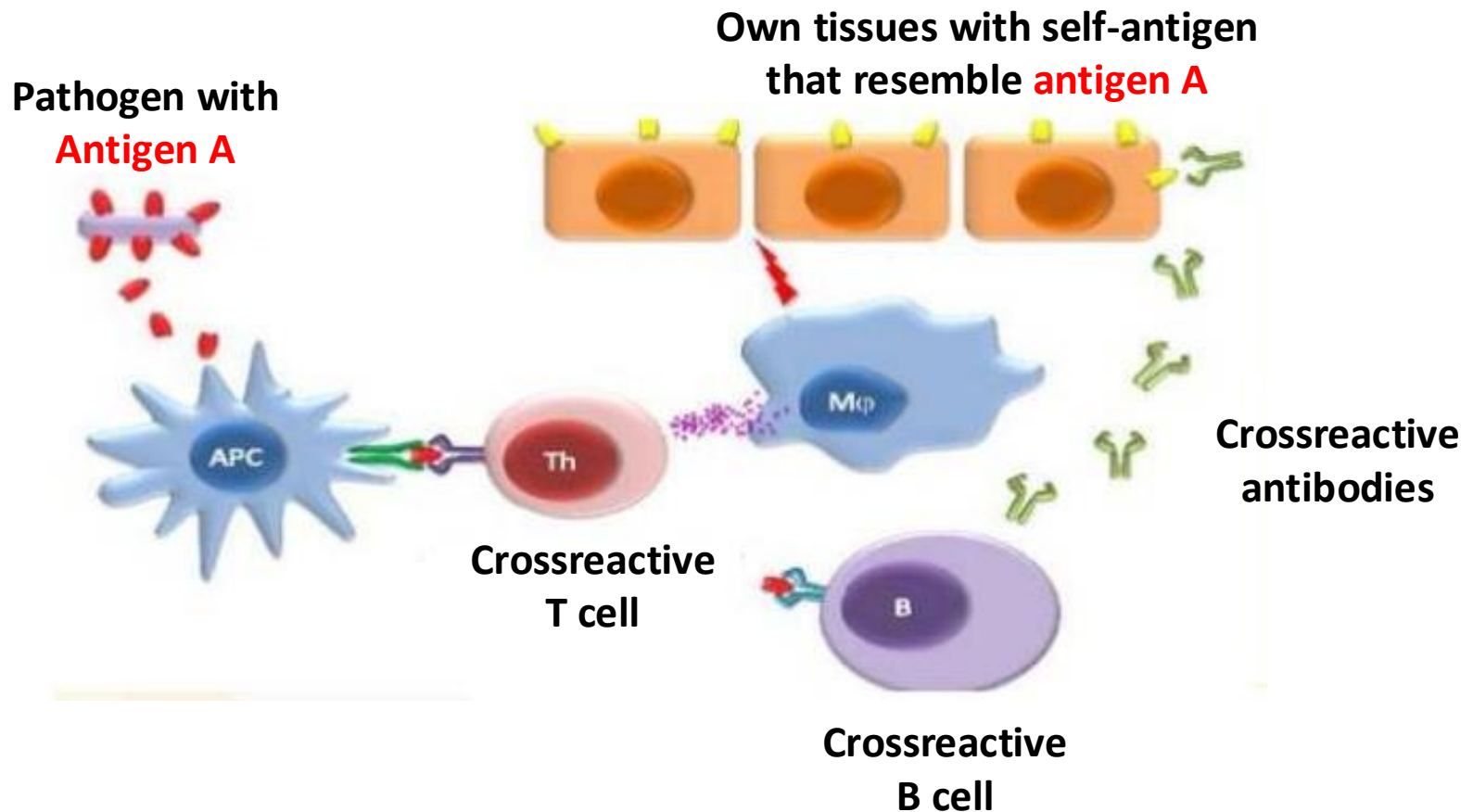
# Autoimmune disorders

- They affect 7-8% of the population.
- Have a strong **female dominance**. (e.g. the male:female ratio in SLE is 1:9)
- Many affect **young adults**.
- Can occur jointly in the same patient. → **Polyautoimmunity** (e.g. a second autoimmune disease occurs in 41% of all patients with SLE)
- **They are chronic illnesses!**
- Their development:

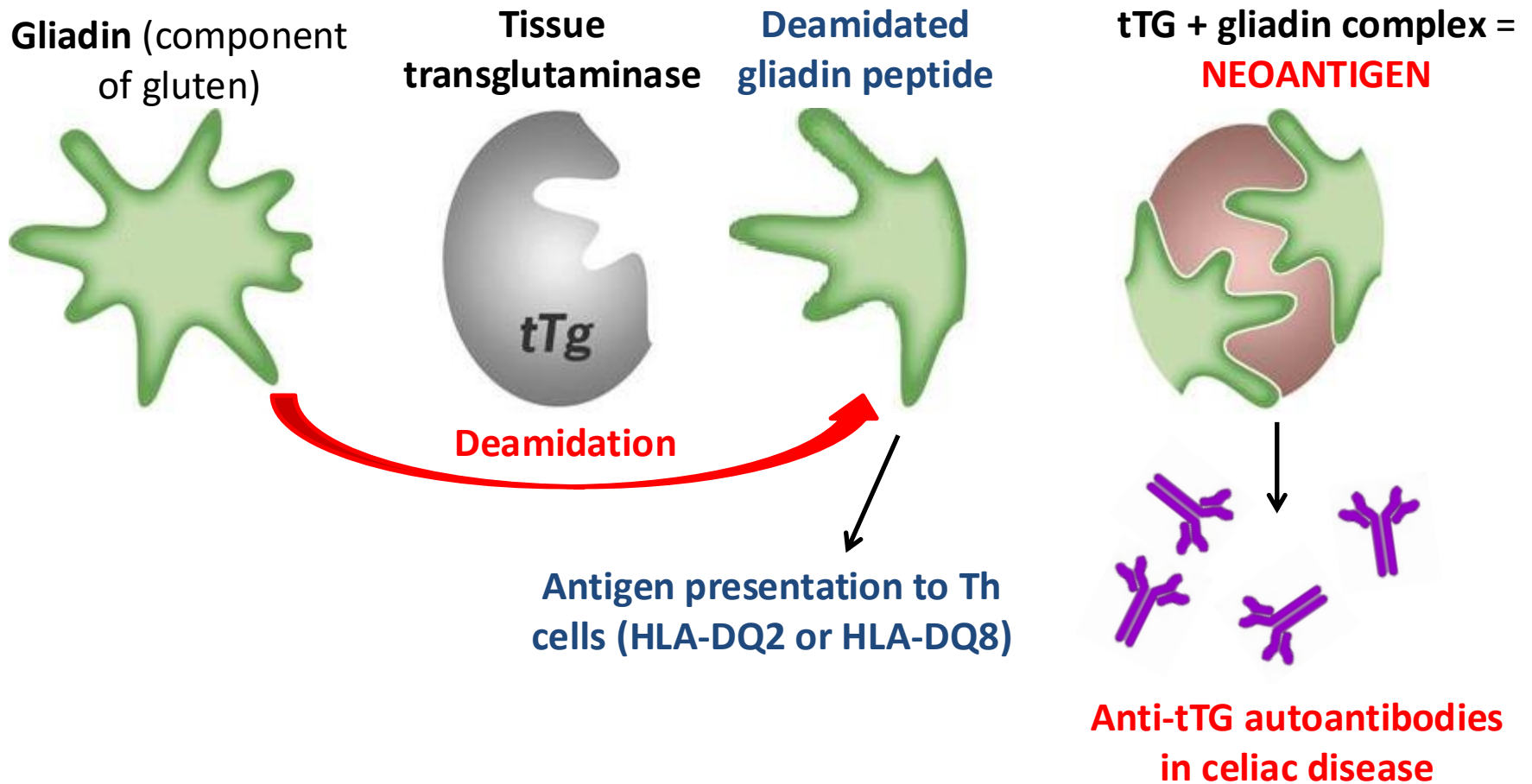


# Molecular mimicry

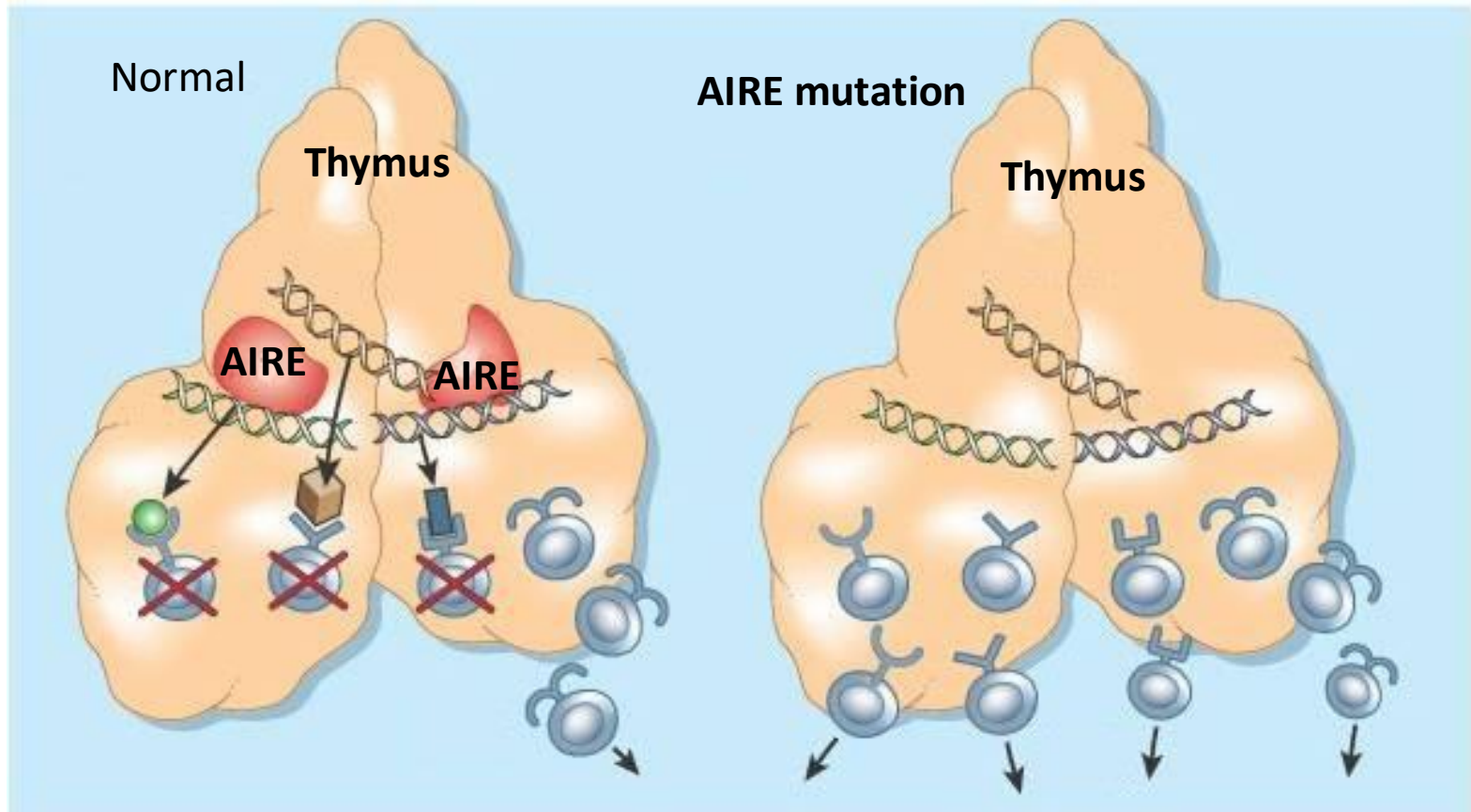
The pathogen's antigen shares a high degree of **structural similarity** with self-antigens. → Can lead to **cross-reaction and autoimmunity** in genetically susceptible people. (e.g. rheumatic fever after *Streptococcus pyogenes* infections)



# Formation of neoantigens



# Loss of central tolerance



**Negative selection**

Autoreactive T cells  
released to the periphery

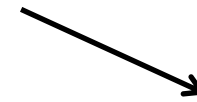
↙  
**APECED** (Autoimmune polyendocrinopathy-candidiasis - ectodermal dystrophy)

# Classification of autoimmune diseases

**Autoimmune disorders**  
(see in the clinical phase)



**Systemic diseases**  
(Affect the entire body)



**Organ-specific diseases**  
(Affect a specific organ)



Rheumatoid arthritis



Addison's disease



Myasthenia gravis



Scleroderma  
(Systemic sclerosis)



SLE (Systemic lupus  
erythematosus)



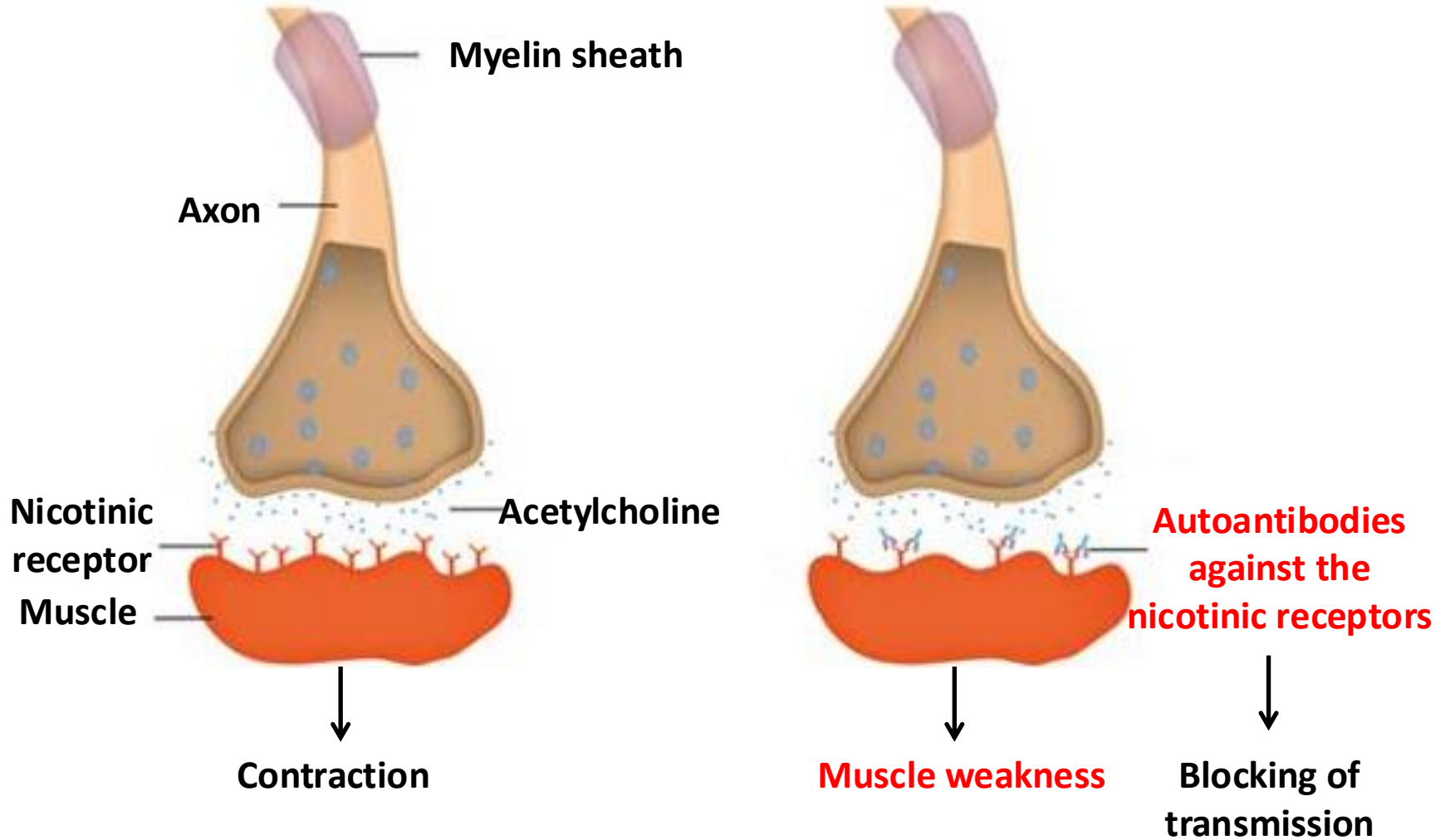
Graves-Basedow disease



# Organ-specific autoantibodies

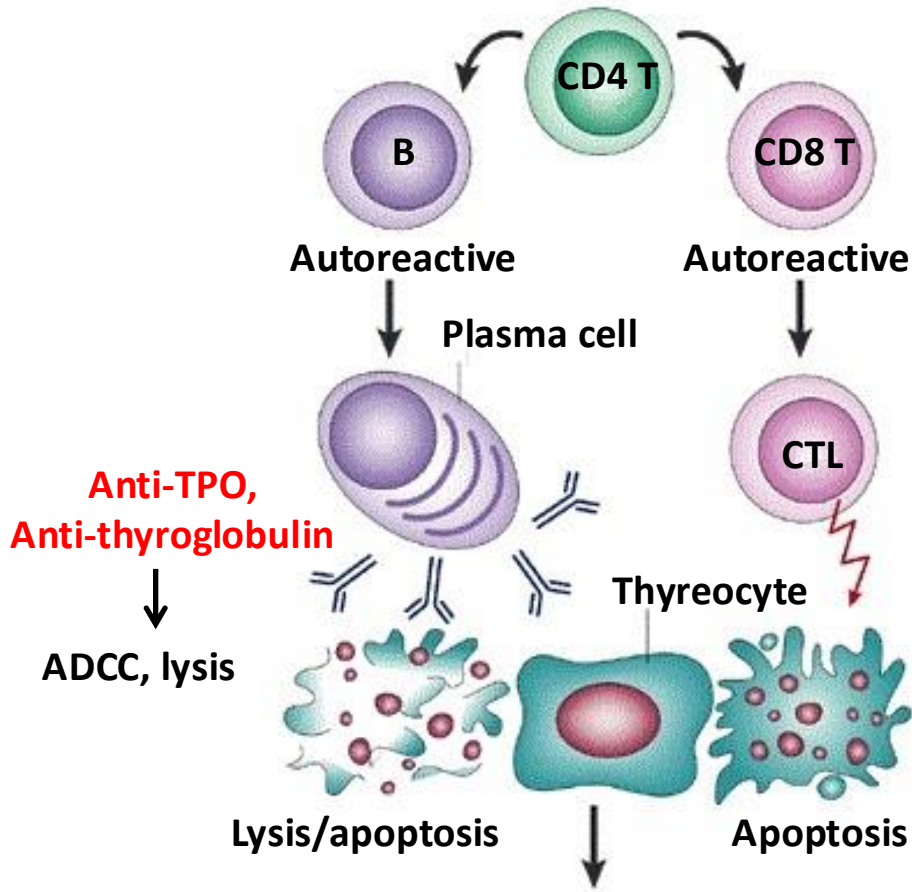
- Occur in organ-specific autoimmune diseases.
- Some examples of the targets of organ-specific autoantibodies:
  - Type I diabetes mellitus (IDDM): glutamic acid decarboxylase (GAD), tyrosine phosphatase-like protein (IA-2)
  - **Autoimmune thyroid diseases: thyroperoxidase (TPO), thyroglobulin**
  - Goodpasture syndrome: type IV collagen (basal membrane in the glomeruli and the lung)
  - **Myasthenia gravis: postsynaptic nicotinic acetylcholine receptors** (neuromuscular junction)
  - **Celiac disease: tissue transglutaminase (tTG)**, endomysium, gliadin (the latter is a component of gluten found in cereals and therefore is not an autoantigen!)
  - Primary biliary cirrhosis: several mitochondrial antigens
- Detection of such autoantibodies can be **diagnostic** and also have **prognostic significance**. Their levels can also be measured to **check the efficacy of treatment**.

# Myasthenia gravis

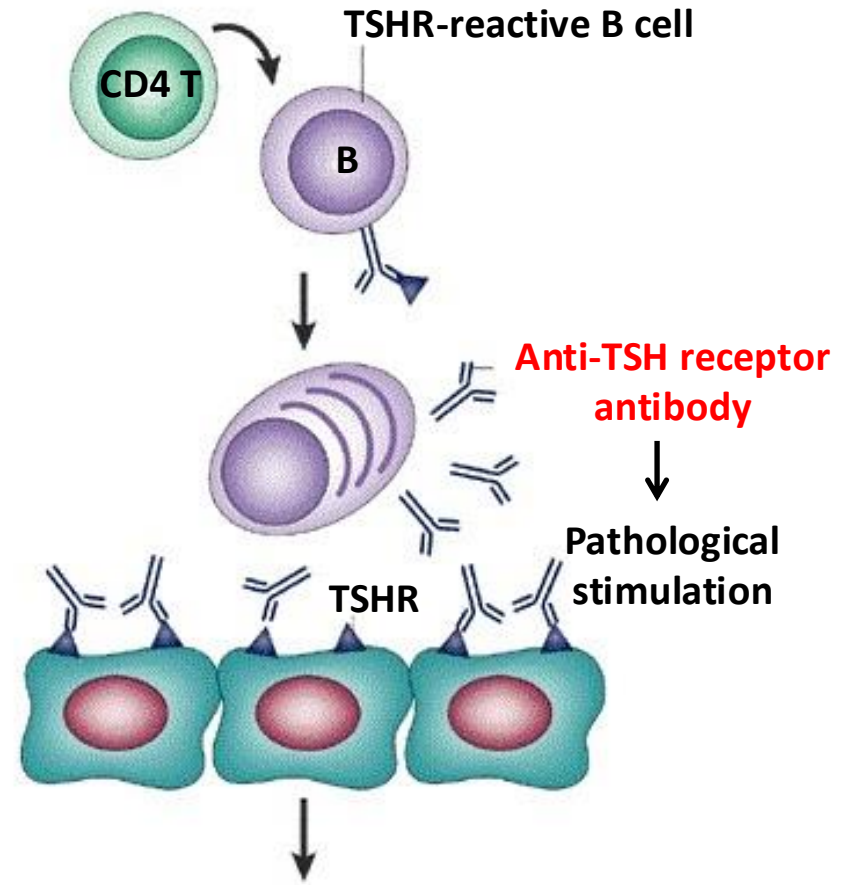


# Autoimmune thyroid diseases

Hashimoto's thyroiditis:



Graves-Basedow disease:

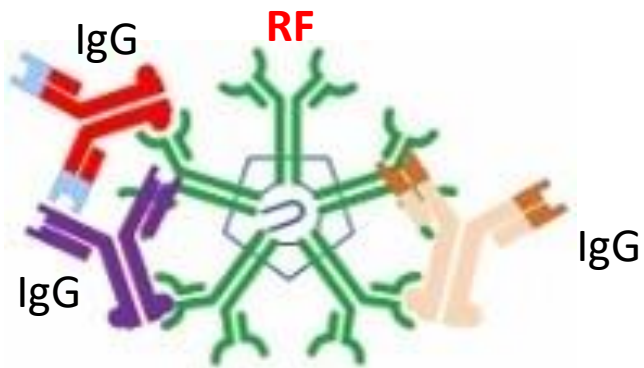


**Hypothyroidism**  
**(T3/T4↓, TSH↑)**

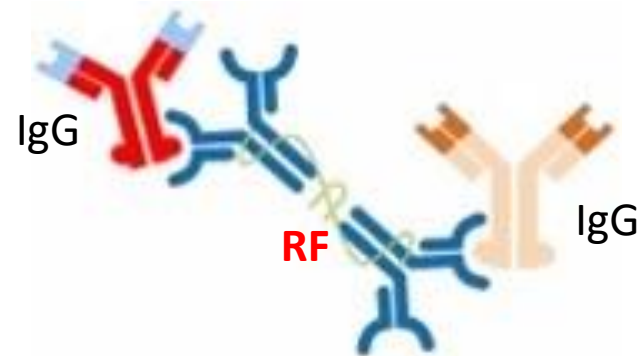
**Hyperthyroidism**  
**(T3/T4↑, TSH↓)**

# Autoantibodies in systemic diseases

- Examples:
  - **Anti-nuclear antibodies (ANA)**
  - Anti-citrullinated protein antibodies (ACPA)
  - **Anti-neutrophil cytoplasmic antibodies (ANCA)**
  - **Rheumatoid factor (RF, anti-IgG antibodies, usually of IgM isotype but can be IgG or IgA)**
  - Antiphospholipid autoantibodies (pl. anti-cardiolipin, anti- $\beta$ 2 glycoprotein I)
- Detection of such autoantibodies can be **diagnostic** and also have **prognostic significance**. Their levels can also be measured to **check the efficacy of treatment**.



Rheumatoid factor of IgM isotype

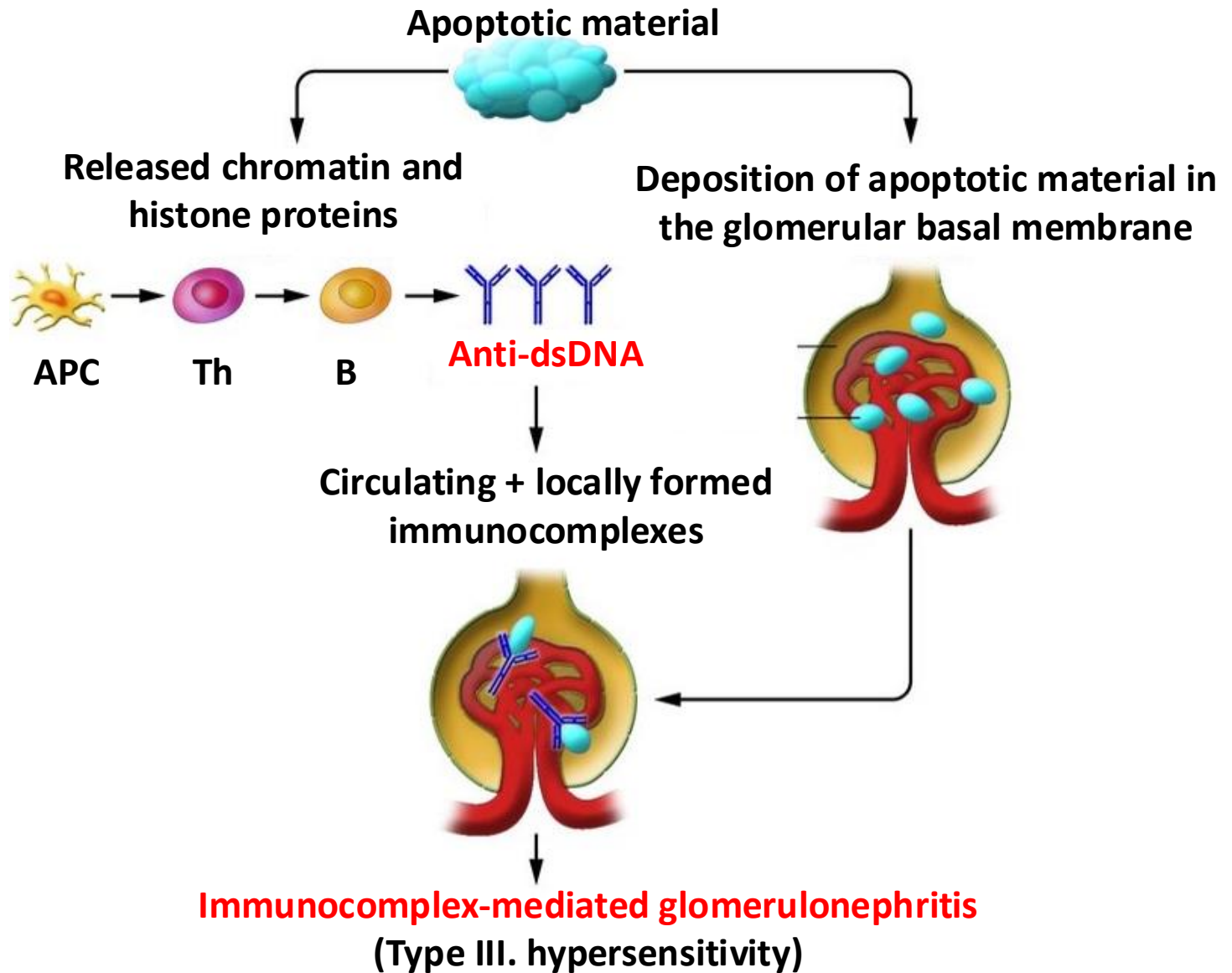


Rheumatoid factor of IgA isotype

# Anti-nuclear antibodies (ANA)

- They recognize different **nuclear structures**, such as:
  - **Anti-double-stranded DNA antibodies** (anti-dsDNA) → Mainly in **SLE**
  - Anti-Smith (anti-SM), against ribonucleoproteins → **SLE**
  - **Anti-Scl-70**, against topoisomerase I → **Scleroderma**
  - **Anti-centromere** antibodies → **Scleroderma**, primary biliary cirrhosis
  - Anti-Ro (anti-SSA) and anti-La (anti-SSB) → Sjögren's syndrome, SLE
  - **Anti-Jo-1** against histidyl-tRNA synthetase → **Polymyositis, dermatomyositis**
  - Anti-histone antibodies → Drug-induced SLE

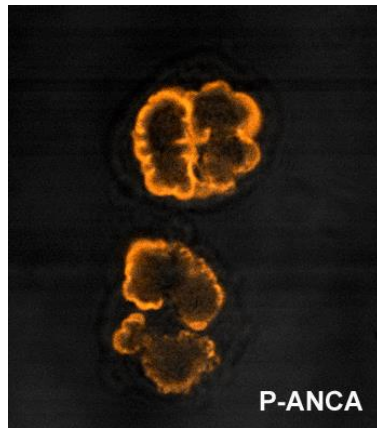
# Lupus nephritis



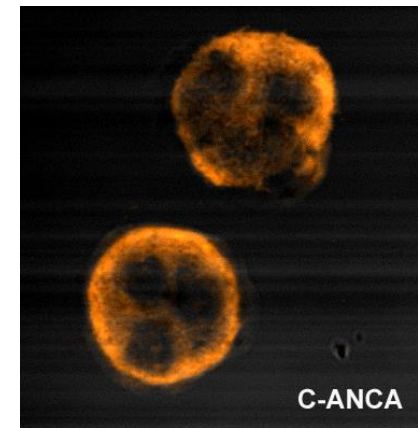
# Anti-neutrophil cytoplasmic antibodies (ANCA)

Have two main types:

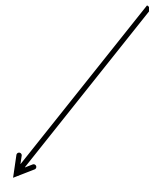
**Perinuclear pattern (p-ANCA)**



**Cytoplasmic pattern (c-ANCA)**



Indirect immunofluorescence  
microscopy

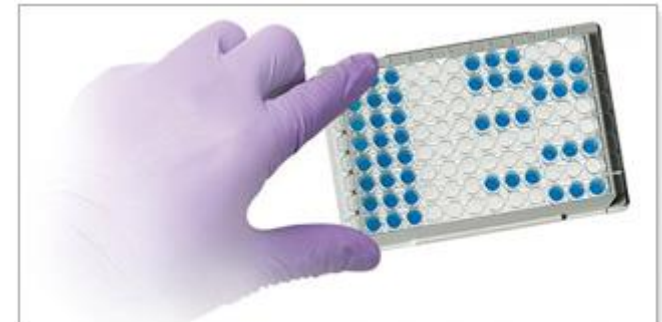


- Antigen: mainly **myeloperoxidase (MPO)**
- Examples:
  - Ulcerative colitis
  - Churg-Strauss syndrome
  - Microscopic polyangiitis
  - Primary sclerosing cholangitis
- Antigen: mainly **proteinase 3 (PR3)**
- Examples:
  - Wegener's granulomatosis (GPA: Granulomatosis with polyangiitis)

# Detection of autoantibodies

- **Screening:**
  - **Direct immunofluorescence:** Performed on tissue samples taken from the patient. (e.g. dermatological or nephrological diseases, see in the clinical phase)
  - **Indirect immunofluorescence:** The patient's serum is tested in different cell cultures or tissue types for autoantibodies.
  - Different autoantibodies produce specific patterns with certain tissues or cells (e.g. homogenous nuclear, nucleolar, centromeric, mitochondrial, cytoplasmatic, etc.)
- **Antigen-specific serological methods:**
  - Done **to confirm the diagnosis** after a positive screening test or after the evaluation of the clinical signs and symptoms of the disease.
  - Methods:
    - **ELISA**
    - **Western blot**
    - **Radial immunodiffusion**

} 6-8th practices

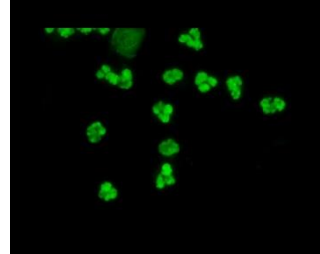


# Characteristics of tests

**Immunofluorescence:** not specific, shows patterns, multiplex image, manual, many autoantibodies cannot be detected



What is this?



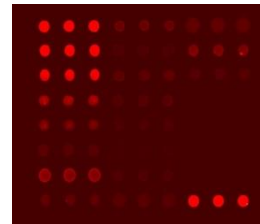
**ELISA:** antigen-specific, can measure individual autoantibodies, can be automated, can identify new autoantigens



Time ?

**Multiplex microarray technology:** antigen-specific, complex autoantibody patterns, can be automated

Quick and specific

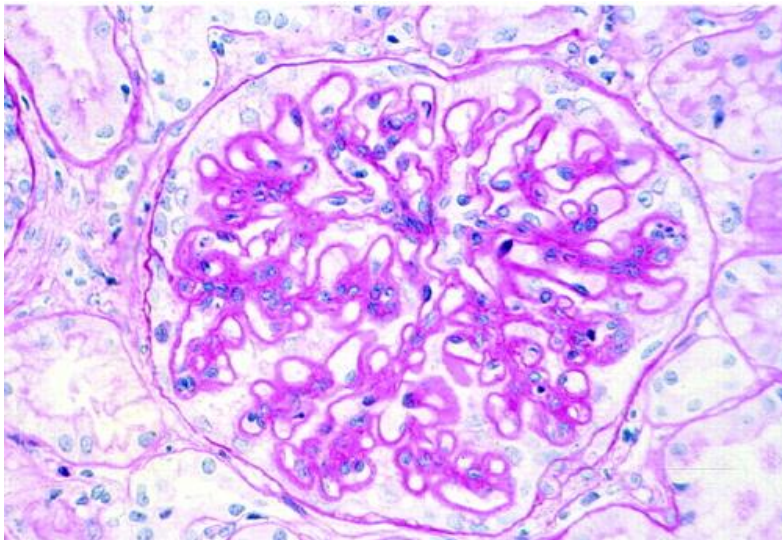


# Immunofluorescence I.

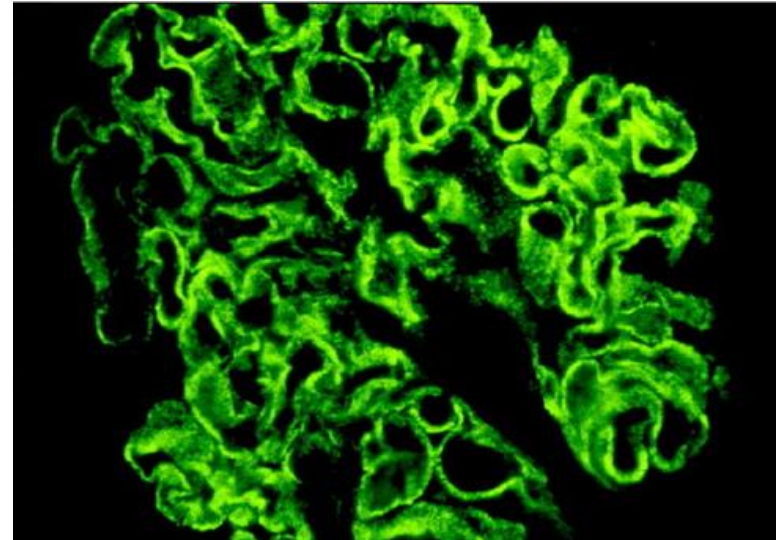
**Direct immunofluorescence** test from the renal manifestation of SLE (lupus nephritis):

- Membranous glomerulonephritis (see from pathology and nephrology)

1. Biopsy from the kidney of the patient

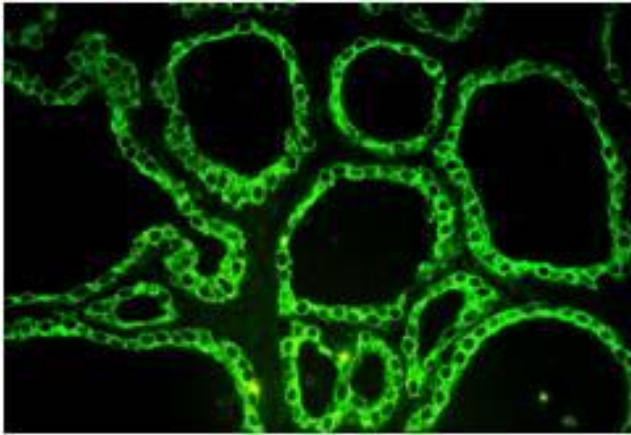


2. Glomerulus with PAS reaction:  
thickened basal membrane

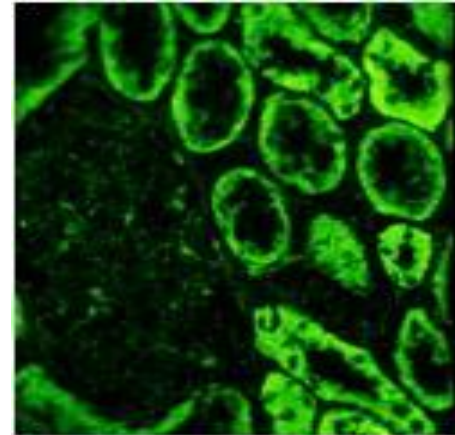


3. **Direct IF** microscopic image of a glomerulus:  
Deposition of **IgG immunocomplexes** in the GBM  
(Type III. hypersensitivity)

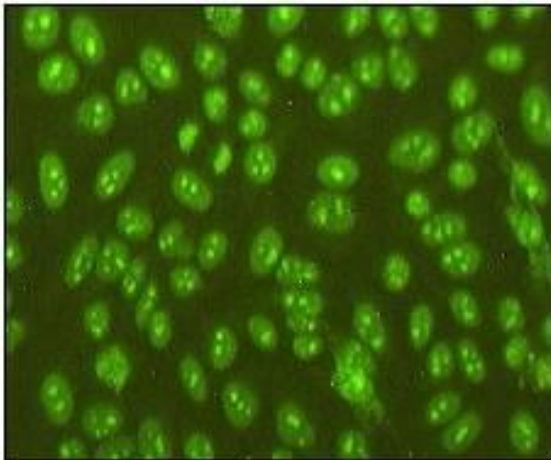
# Immunofluorescence II.



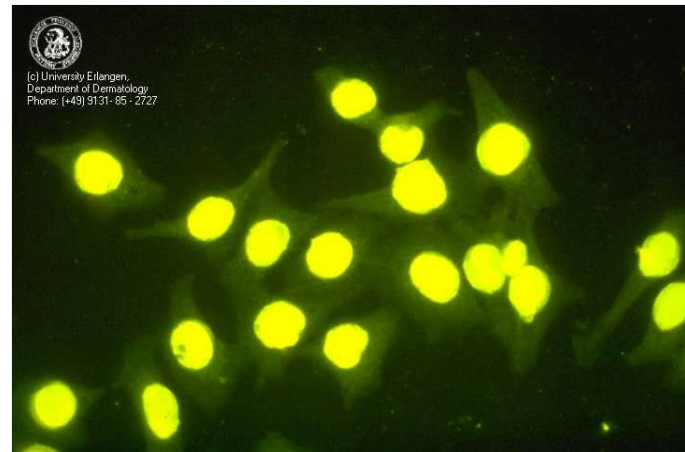
Anti-TPO autoantibodies in a thyroid tissue section



Mitochondrial staining pattern in a kidney tissue



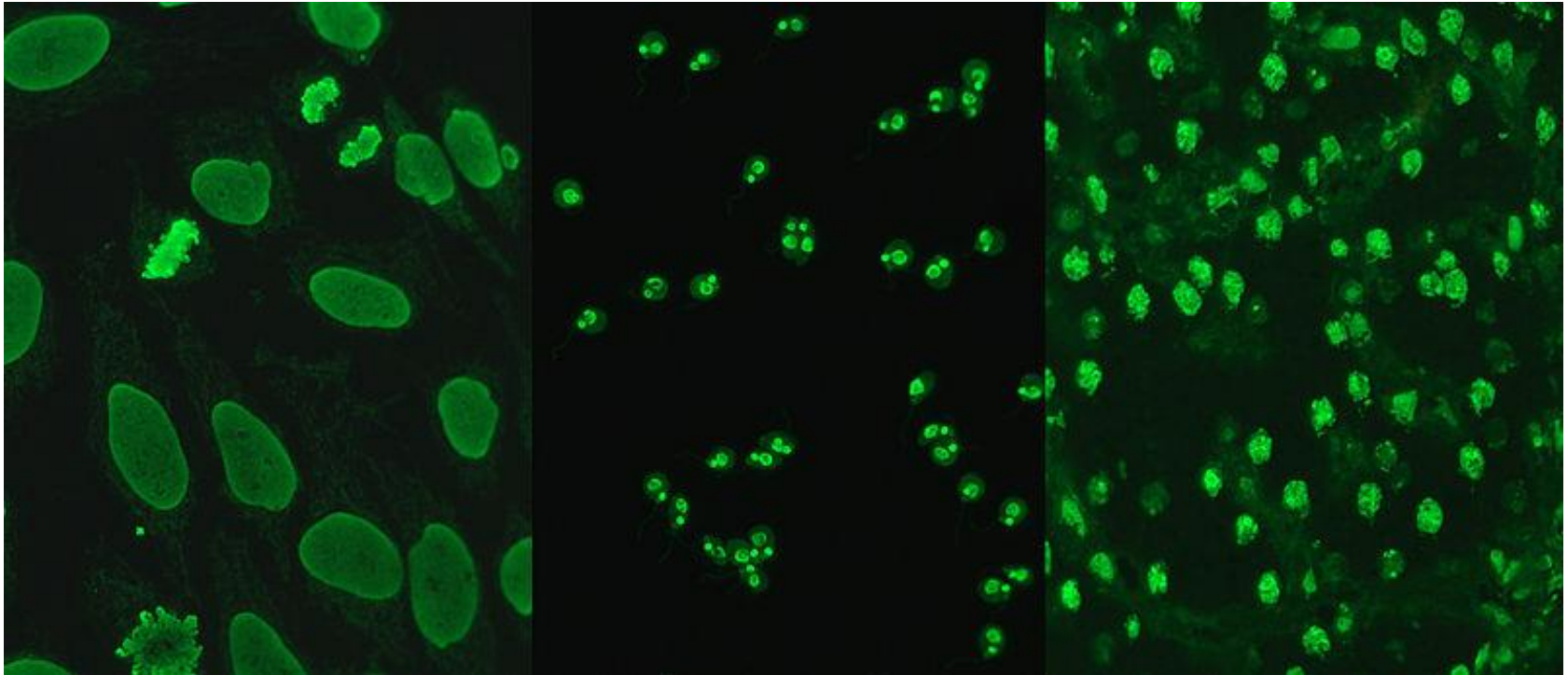
Nucleolar pattern in Hep2 cells (anti-SSA)



Homogenous nuclear staining in Hep2 cells (anti-dsDNA)

# Immunofluorescence III.

Detection of **Anti-dsDNA** from the serum of the patient with **indirect immunofluorescence microscopy** in different cell types:



HEp-20-10 cell culture  
(human epithelial tumor)

*Crithidia luciliae* cells  
(protist parasite)

Rat liver tissue

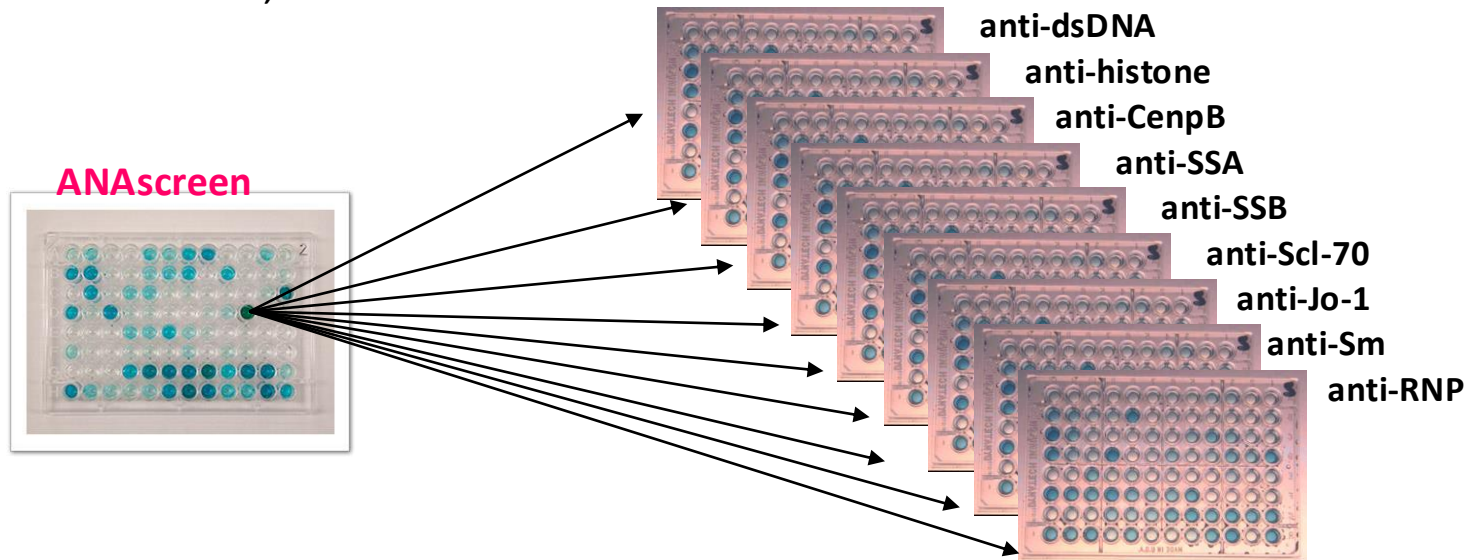
# ANAscreen - microplate ELISA

The ELISA plate is sensitized with a **mixture of antigens** derived from the nuclei of Hep2 cells:

- dsDNA
- histone
- centromere
- SSA/Ro, SSB/La
- Sm, Sm/RNP
- Scl-70, Jo-1



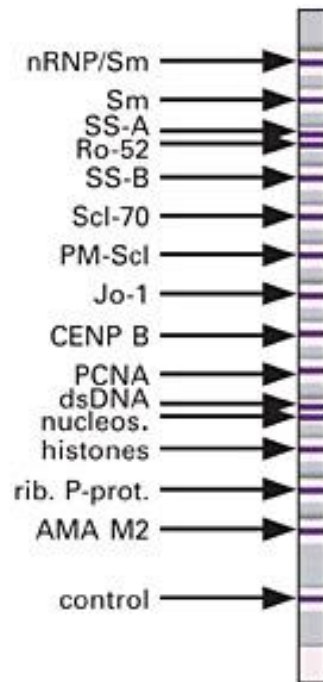
**If positive**, than the test is repeated with ELISA plates **each sensitized with only one specific antigen.**



# Multiplex immunoserological methods

1. **Immunoblot:** the antigen is in a denatured conformation, high number of false positive/negative results, not used
2. **Protein chip methods: „microarray“:** - chip reader
  - glass
  - plastic
  - silicon
  - nano-well
3. **Microbead-based methods:** - Flow cytometer
  - Becton Dickinson
  - Bender MedSystem
  - Luminex platform

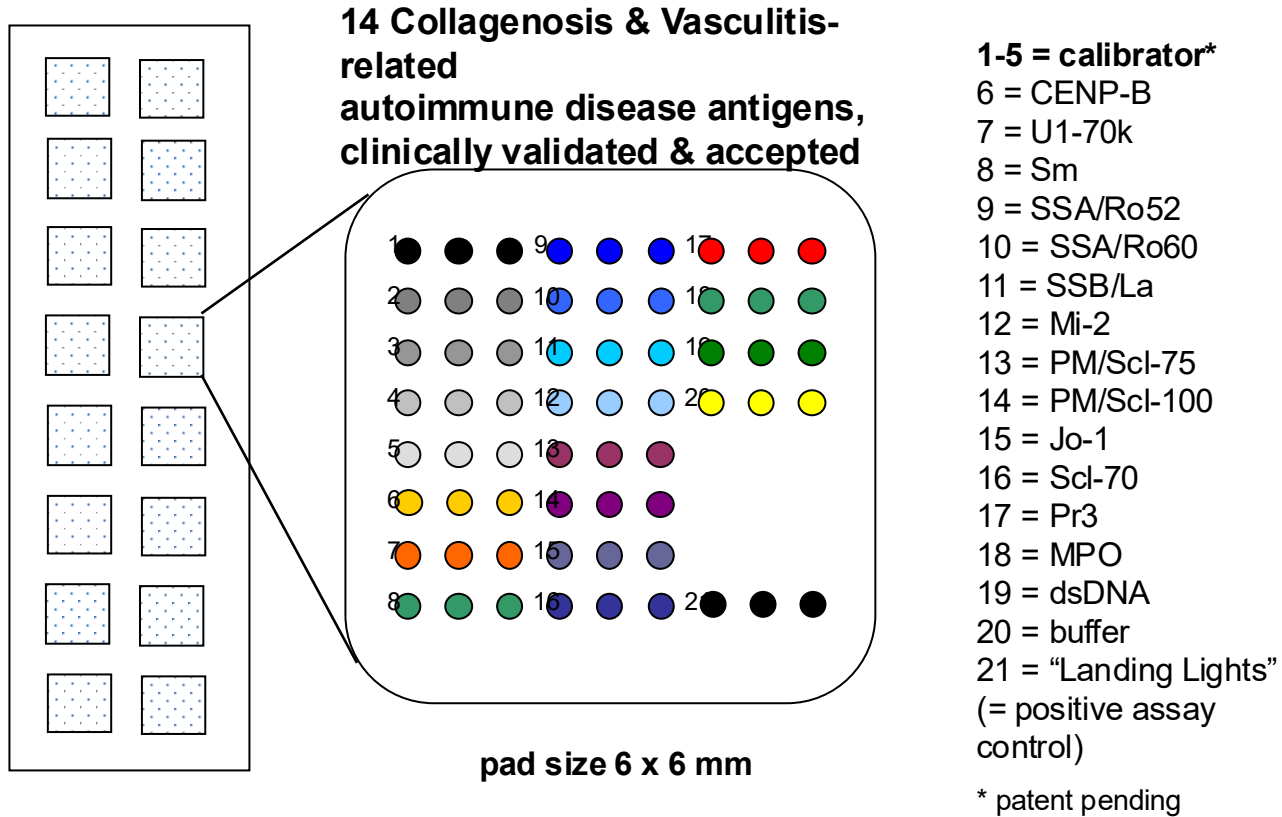
# ANA-Profil Immunoblot



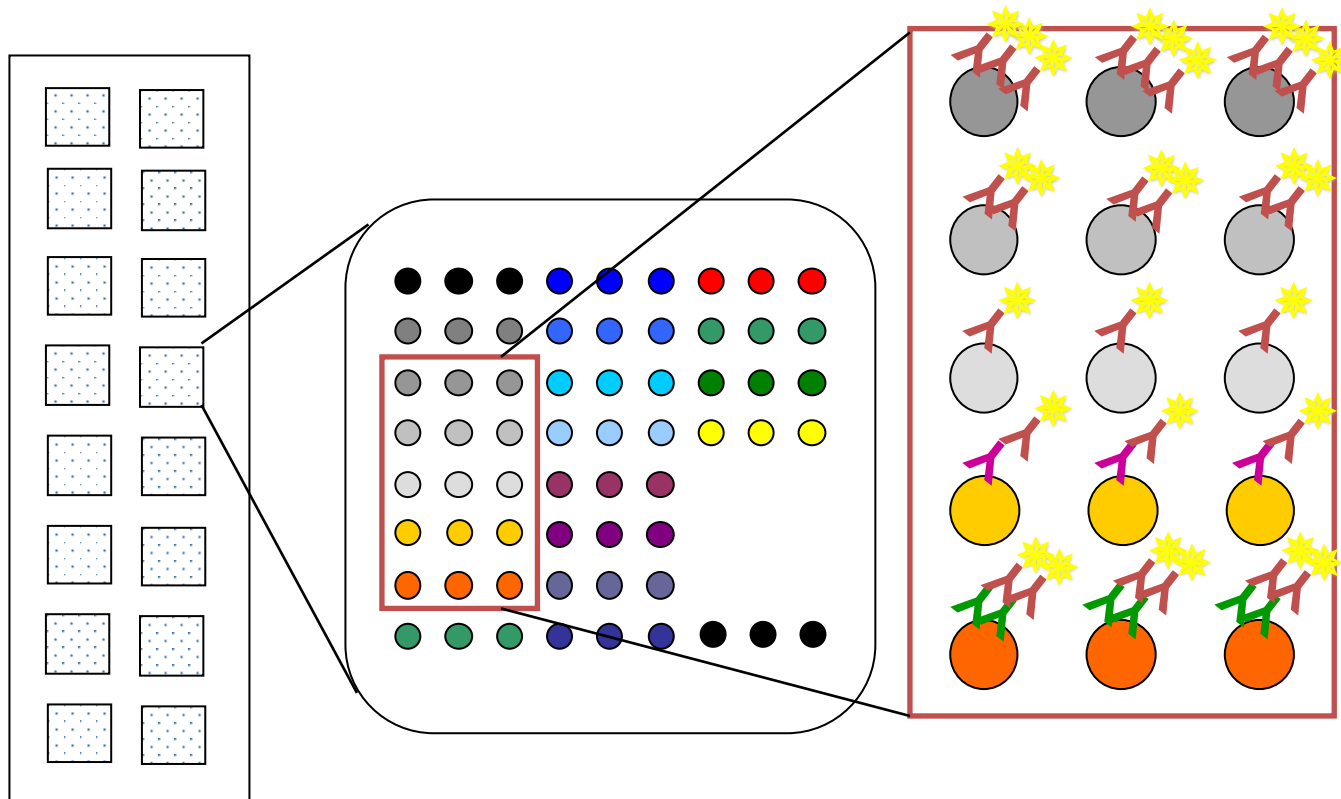
Előnye: - 1 beteg mintája is vizsgálható  
- gyors

Hátrány: - antigén denaturált, nem megfelelő konformációban  
- ál-negatív reakciók  
- sok antigén nem vizsgálható

# CombiChip Autoimmune 1.0 Layout



# CombiChip Autoimmune 1.0 Layout



# References (not in order)

- Poletaev AB<sup>1</sup>, et al.: **Immunophysiology versus immunopathology: Natural autoimmunity in human health and disease.** *Pathophysiology*. 2012 Jun;19(3):221-31. doi: 10.1016/j.pathophys.2012.07.003. Epub 2012 Aug 9.
- Nguyen TT<sup>1</sup>, Elsner RA<sup>2</sup>, Baumgarth N<sup>3</sup>: **Natural IgM prevents autoimmunity by enforcing B cell central tolerance induction.** *J Immunol*. 2015 Feb 15;194(4):1489-502. doi: 10.4049/jimmunol.1401880. Epub 2015 Jan 16.
- Binder CJ<sup>1</sup>: **Naturally occurring IgM antibodies to oxidation-specific epitopes.** *Adv Exp Med Biol*. 2012;750:2-13. doi: 10.1007/978-1-4614-3461-0\_1.
- Lutz HU<sup>1</sup>: **Homeostatic roles of naturally occurring antibodies: an overview.** *J Autoimmun*. 2007 Dec;29(4):287-94. Epub 2007 Sep 12.
- Lutz HU<sup>1</sup>, Binder CJ, Kaveri S: **Naturally occurring auto-antibodies in homeostasis and disease.** *Trends Immunol*. 2009 Jan;30(1):43-51. doi: 10.1016/j.it.2008.10.002. Epub 2008 Dec 4.
- Aziz M<sup>1</sup>, et al.: **The role of B-1 cells in inflammation.** *Immunol Res*. 2015 Dec;63(1-3):153-66. doi: 10.1007/s12026-015-8708-3.
- Savage HP<sup>1,2</sup>, Baumgarth N<sup>1,2,3</sup>: **Characteristics of natural antibody-secreting cells.** *Ann N Y Acad Sci*. 2015 Jun 23. doi: 10.1111/nyas.12799.
- Grönwall C<sup>1</sup>, Vas J, Silverman GJ: **Protective Roles of Natural IgM Antibodies.** *Front Immunol*. 2012 Apr 4;3:66. doi: 10.3389/fimmu.2012.00066. eCollection 2012.
- Elkon K<sup>1</sup>, Casali P: **Nature and functions of autoantibodies.** *Nat Clin Pract Rheumatol*. 2008 Sep;4(9):491-8. doi: 10.1038/ncprheum0895.
- Grönwall C<sup>1</sup>, Silverman GJ: **Natural IgM: beneficial autoantibodies for the control of inflammatory and autoimmune disease.** *J Clin Immunol*. 2014 Jul;34 Suppl 1:S12-21. doi: 10.1007/s10875-014-0025-4. Epub 2014 Apr 2.
- Cohen IR<sup>1</sup>: **Biomarkers, self-antigens and the immunological homunculus.** *J Autoimmun*. 2007 Dec;29(4):246-9. Epub 2007 Sep 20.

# References

- Vas J<sup>1</sup>, Grönwall C, Silverman GJ: **Fundamental roles of the innate-like repertoire of natural antibodies in immune homeostasis.** *Front Immunol.* 2013 Feb 5;4:4. doi: 10.3389/fimmu.2013.00004. eCollection 2013.
- Xu X<sup>1</sup>, et al.: **Human-derived natural antibodies: biomarkers and potential therapeutics.** *Future Neurol.* 2015;10(1):25-39.
- Casali P<sup>1</sup>, Schettino EW: **Structure and function of natural antibodies.** *Curr Top Microbiol Immunol.* 1996;210:167-79.
- Panda S<sup>1</sup>, Ding JL<sup>2</sup>: **Natural antibodies bridge innate and adaptive immunity.** *J Immunol.* 2015 Jan 1;194(1):13-20. doi: 10.4049/jimmunol.1400844.
- Mannoor K<sup>1</sup>, Xu Y, Chen C: **Natural autoantibodies and associated B cells in immunity and autoimmunity.** *Autoimmunity.* 2013 Mar;46(2):138-47. doi: 10.3109/08916934.2012.748753. Epub 2013 Jan 10.
- Madi A<sup>1</sup>, et al.: **The natural autoantibody repertoire in newborns and adults: a current overview.** *Adv Exp Med Biol.* 2012;750:198-212. doi: 10.1007/978-1-4614-3461-0\_15.
- Kaveri SV<sup>1</sup>: **Intravenous immunoglobulin: exploiting the potential of natural antibodies.** *Autoimmun Rev.* 2012 Sep;11(11):792-4. doi: 10.1016/j.autrev.2012.02.006. Epub 2012 Feb 12.
- Choi YS<sup>1</sup>, et al.: **B-1 cells in the bone marrow are a significant source of natural IgM.** *Eur J Immunol.* 2012 Jan;42(1):120-9. doi: 10.1002/eji.201141890. Epub 2011 Nov 28.
- Rahyab AS<sup>1</sup>, et al.: **Natural antibody - Biochemistry and functions.** *Glob J Biochem.* 2011;2(4):283-288.
- Baumgarth N<sup>1</sup>: **The double life of a B-1 cell: self-reactivity selects for protective effector functions.** *Nat Rev Immunol.* 2011 Jan;11(1):34-46. doi: 10.1038/nri2901. Epub 2010 Dec 10.
- Chan AY<sup>1,2</sup>, Anderson MS<sup>1</sup>: **Central tolerance to self revealed by the autoimmune regulator.** *Ann N Y Acad Sci.* 2015 Nov;1356:80-9. doi: 10.1111/nyas.12960.

# References

- Anaya JM<sup>1</sup>: **The diagnosis and clinical significance of polyautoimmunity.** *Autoimmun Rev.* 2014 Apr-May;13(4-5):423-6. doi: 10.1016/j.autrev.2014.01.049. Epub 2014 Jan 11.
- Pisetsky DS<sup>1</sup>: **Anti-DNA antibodies - quintessential biomarkers of SLE.** *Nat Rev Rheumatol.* 2015 Nov 19. doi: 10.1038/nrrheum.2015.151.
- Czömpöly T<sup>1</sup>, et al.: **Anti-topoisomerase I autoantibodies in systemic sclerosis.** *Autoimmun Rev.* 2009 Jul;8(8):692-6. doi: 10.1016/j.autrev.2009.02.018. Epub 2009 Feb 13.
- Nihtyanova SI<sup>1</sup>, Denton CP: **Autoantibodies as predictive tools in systemic sclerosis.** *Nat Rev Rheumatol.* 2010 Feb;6(2):112-6. doi: 10.1038/nrrheum.2009.238.
- Liberal R<sup>1</sup>, et al.: **Diagnostic and clinical significance of anti-centromere antibodies in primary biliary cirrhosis.** *Clin Res Hepatol Gastroenterol.* 2013 Dec;37(6):572-85. doi: 10.1016/j.clinre.2013.04.005. Epub 2013 Jul 19.
- Zampieri S<sup>1</sup>, et al.: **Anti-Jo-1 antibodies.** *Autoimmunity.* 2005 Feb;38(1):73-8.
- Aggarwal A<sup>1</sup>: **Role of autoantibody testing.** *Best Pract Res Clin Rheumatol.* 2014 Dec;28(6):907-20. doi: 10.1016/j.berh.2015.04.010. Epub 2015 May 23.
- Csernok E<sup>1</sup>, Moosig F<sup>1</sup>: **Current and emerging techniques for ANCA detection in vasculitis.** *Nat Rev Rheumatol.* 2014 Aug;10(8):494-501. doi: 10.1038/nrrheum.2014.78. Epub 2014 Jun 3.
- Poletaev AB<sup>1</sup>, Stepanyuk VL, Gershwin ME: **Integrating immunity: the immunculus and self-reactivity.** *J Autoimmun.* 2008 Feb-Mar;30(1-2):68-73. doi: 10.1016/j.jaut.2007.11.012.
- Poletaev AB<sup>1</sup>: **The immunological homunculus (immunculus) in normal state and pathology.** *Biochemistry (Mosc).* 2002 May;67(5):600-8.